



EDGE RECORDING MANAGER

USER GUIDE

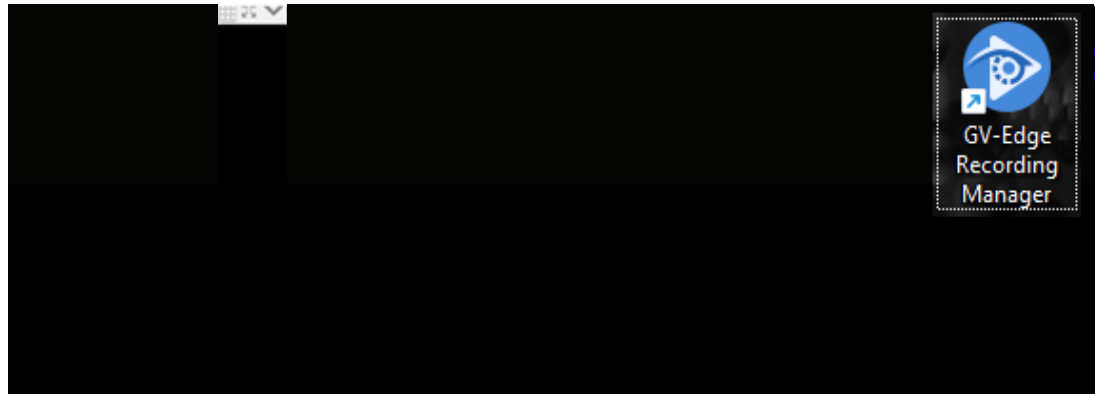
Accessing Live View | Accessing Recordings | Saving Footage

(888) 909-2261

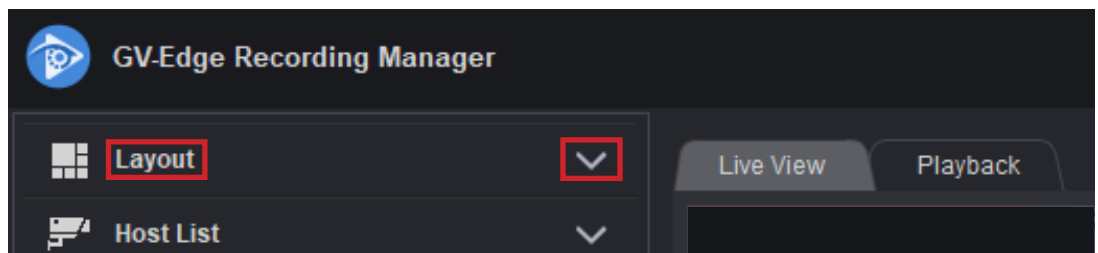
service@hssems.com

ACCESSING LIVE VIEW

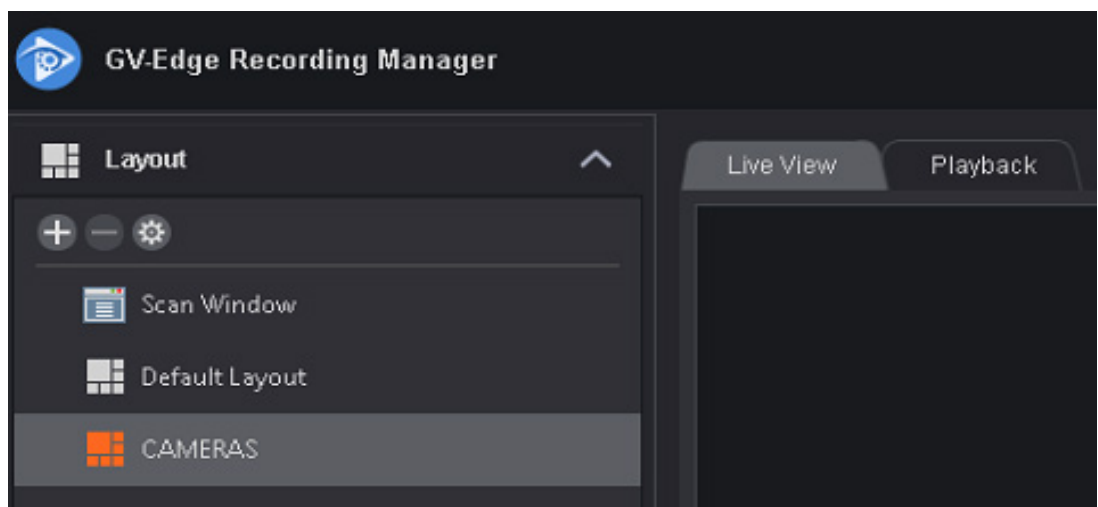
- **Step 1:** For live view of the cameras, start by accessing your desktop and clicking the *GV-Edge Recording Manager* application icon shown below.



- **Step 2:** Your cameras should appear upon opening the application. If they do not appear, you will need to access the *Layout* option with a double left-click.

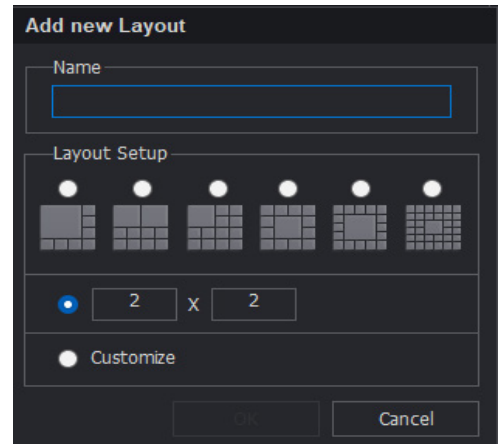
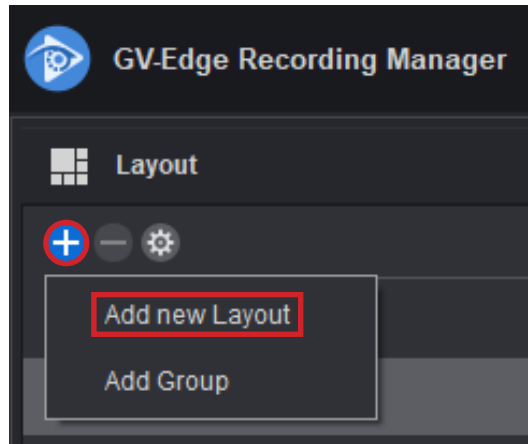


Once you have selected the drop-down arrow, double click your camera layout.

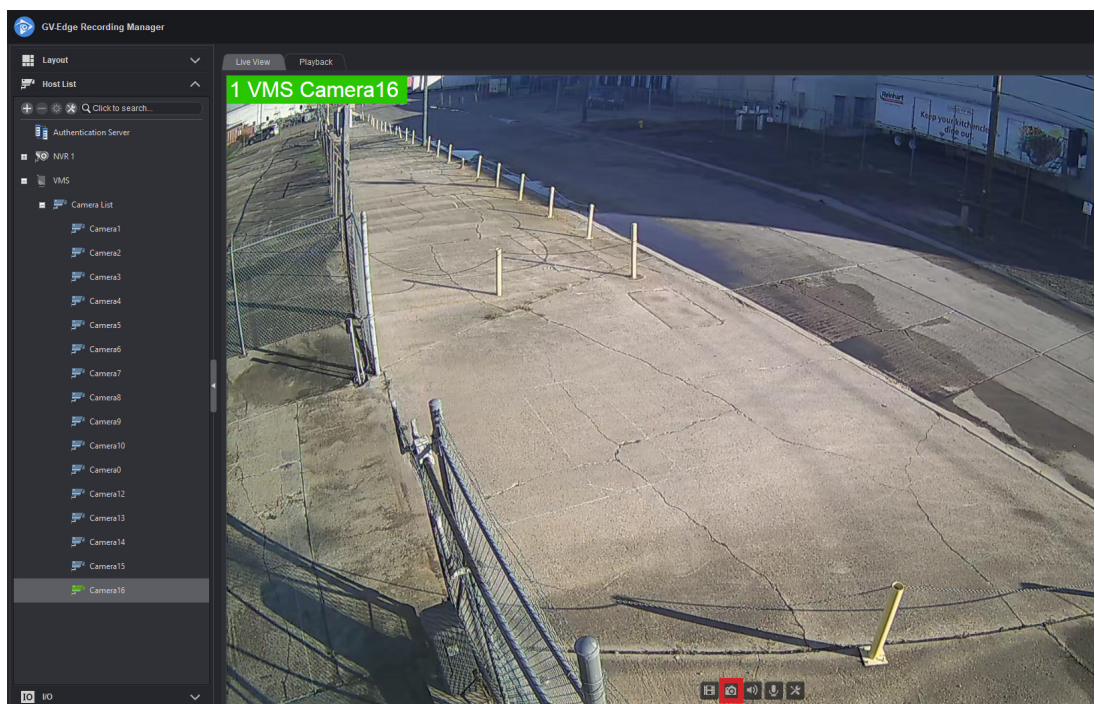


ACCESSING LIVE VIEW

- **Step 3:** To customize your camera layout in any format, utilize the (+) button and *Add New Layout*. This will give you an option to name and adjust the layout of up to 32 cameras. Next, drag and drop cameras from the host list in any order desired.

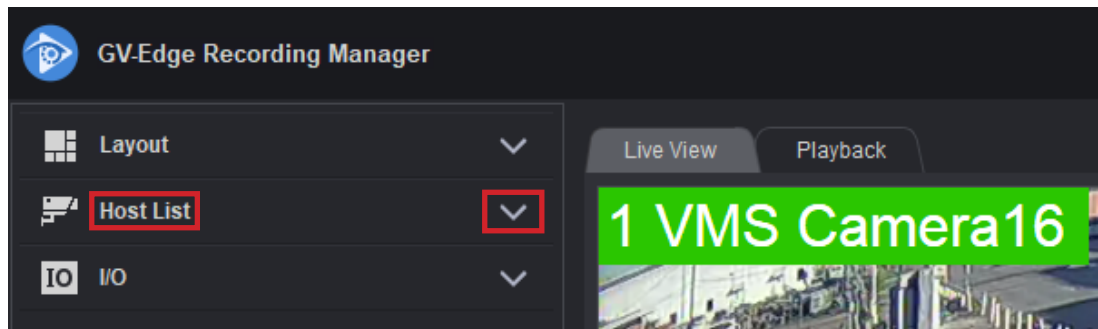


- **Step 4:** To view an image in full screen mode, double left-click anywhere on the image. You can find additional options within the camera feed on the bottom.
- *For audio cameras, click the speaker icon boxed in red. To end the audio, select it once more.

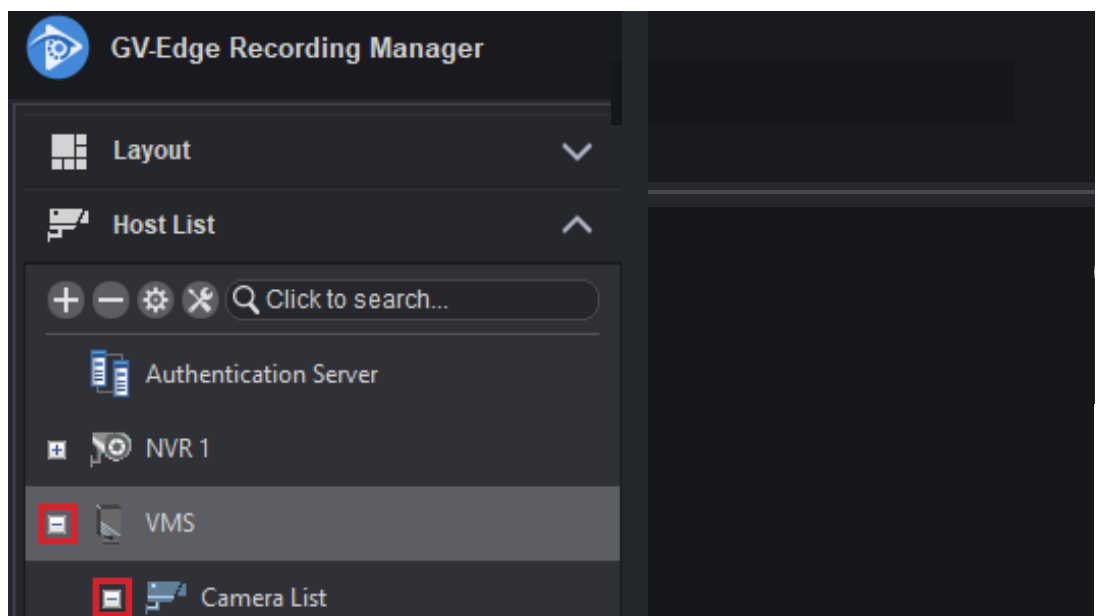


ACCESSING RECORDINGS

- **Step 1:** First, locate the camera you wish to review. (Ex: 1 VMS Camera 16). You can access this information from the area highlighted in green. After selecting the camera name, drop down the Host List.

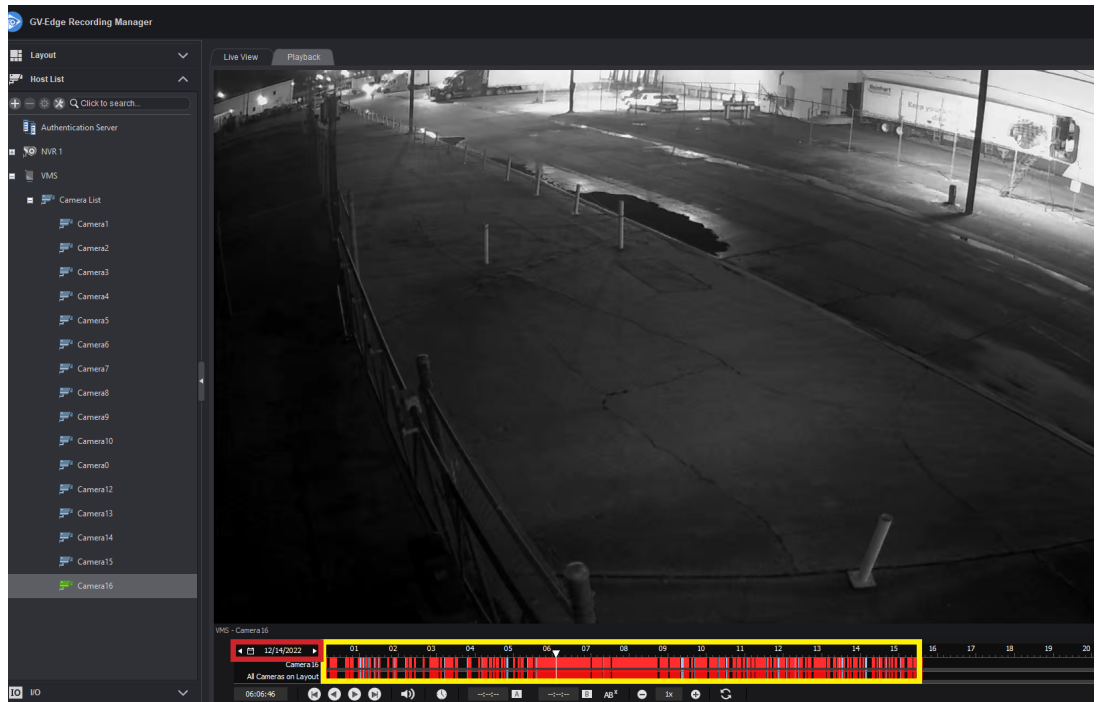


- **Step 2:** Select the (+) icon beside both VMS and Camera List and choose the camera you would like to review.



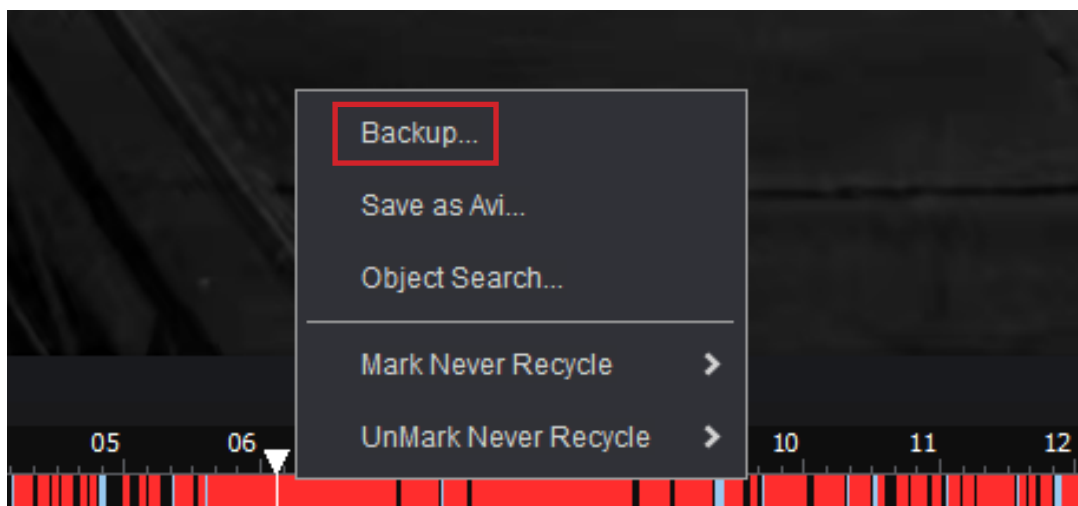
ACCESSING RECORDINGS

- ➡ **Step 3:** Next, right-click and select *Remote View Log*. After selecting, you will be taken to the screen below. The area boxed in red is where you can select the specific date that the incident occurred. The area boxed in yellow displays the time chart.



SAVING FOOTAGE

- ➡ **Step 1:** In order to save your recordings, begin by right-clicking in the time frame. Slightly drag your mouse in either direction and then release. If done correctly, the following image will appear. Select *Backup*.



- **Step 2:** Enter the dates and times of the incident you would like to save. After all of the information is entered, ensure that the box next to the camera is checked, and select *OK*.

Time Period

Start Time : 12/14/2022 - 08:09:43

End Time : 12/14/2022 - 08:20:08

Advanced Setting :

Information

Status

Total Event : 12

Total MDB : 0

Total Object Index : 0

Total Bookmarks : 0

Used Size : 74.59 MB

Select Camera(s)

☒ 192.168.2.210 - Camera16

12 + 0

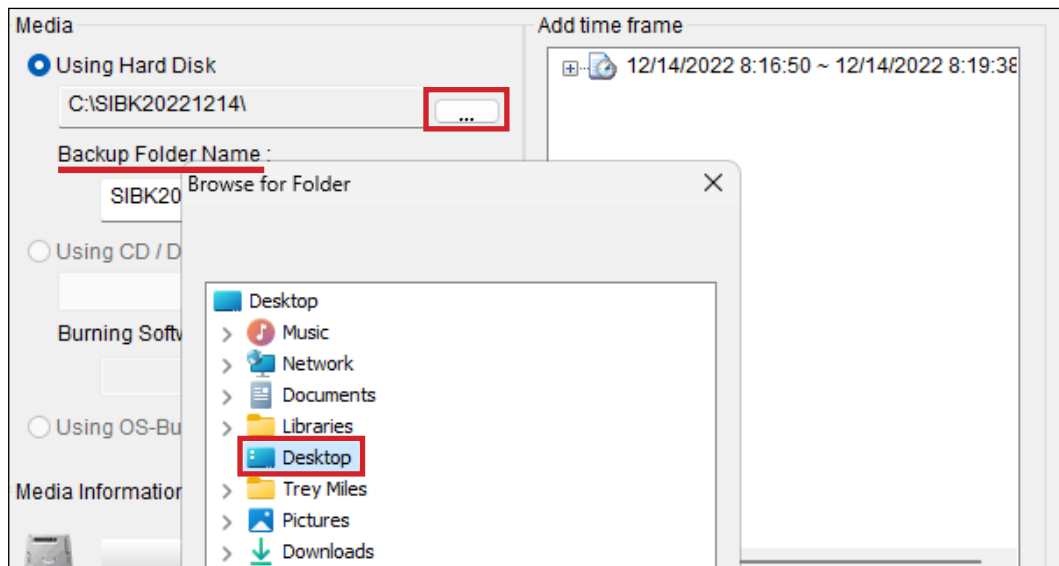
Video + Audio Event

OK

Cancel

SAVING FOOTAGE

- **Step 3:** Next, select the three dots boxed in red and make sure *Desktop* is selected. You can also name your folder under the *Backup Folder Name* underlined in red. Click *OK* in both windows to save the footage. You can then minimize everything and head to your desktop.



- **Step 4:** Open the desktop folder and find the executable file *EzViewLog.exe*. This will open and play the saved video recording.

